



MOUNT SINAI  
SCHOOL OF  
MEDICINE

# EMERGENCY & CRITICAL CARE

## ULTRASOUND

### Course

### March 7, 2011

#### Schedule

8:00-8:45am

Physics, instrumentation  
Robert Arntfield, MD

8:45-9:30am

Airway and Breathing  
Jim Tsung, MD, MPH

9:30-9:45am

Break

9:45-10:30am

Disability  
Phil Andrus, MD

10:30-11:30am

Circulation  
Scott Weingart, MD, RDMS

11:30- 12:25pm

Ultrasound for Procedures  
Danny Duque, MD, RDMS

12:15-1pm

Lunch (provided)

1-5pm

Hands-on Session  
Faculty

Sponsored by the Department of Emergency Medicine, Mount Sinai School of Medicine

Visit [www.SinaiEM.us](http://www.SinaiEM.us) for further details

#### Program Goal

As a result of this course, participants should feel comfortable with the use of bedside ultrasound for diagnosis of emergent pathology and in guidance of bedside procedures

#### Educational Objectives

At the conclusion of this CME activity, the participant should be able to:

1. Discuss the practical clinical use of ultrasound in patient care
2. Identify normal anatomy as well as pathology such as pericardial effusion, hemoperitoneum, and pneumothorax
3. Guide bedside procedures such as IV access and others

**Course Director:**  
Bret P. Nelson, MD, RDMS  
[bret.nelson@mssm.edu](mailto:bret.nelson@mssm.edu)

**To register, contact:**  
[www.mssm.edu/cme/courses/ultrasound](http://www.mssm.edu/cme/courses/ultrasound)

Email: [cme@mssm.edu](mailto:cme@mssm.edu)  
Phone: 212-731-7950



### Target Audience

Emergency and Critical Care physicians and PAs

### Renowned Faculty

Our faculty have lectured nationally and internationally and have extensive experience in teaching ultrasound to physicians of all levels

*“Superior presentation. Speakers were excellent.”*

### Live models and hands-on sessions

Didactic sessions are reinforced with ample time for scanning on live models, questions and answers, and practicing procedural techniques on simulators

*“Hands-on training greatly improved my confidence and abilities.”*

### This activity has been approved for 8 AMA PRA Category 1 Credits



### ACCREDITATION

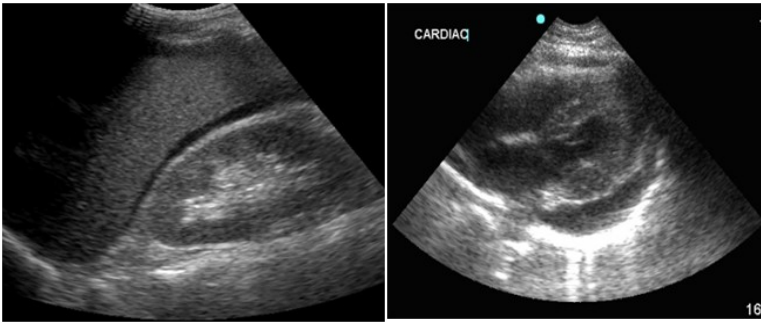
The Mount Sinai School of Medicine is accredited by the Accreditation Council for Continuing Medical Education to provide continuing medical education for physicians.

### CREDIT DESIGNATION

The Mount Sinai School of Medicine designates this live activity for a maximum of 8.0 AMA PRA Category 1 Credits™. Physicians should only claim credit commensurate with the extent of their participation in the activity.

### SPECIAL NEEDS

Mount Sinai School of Medicine fully complies with the legal requirements of the Americans with Disabilities Act



### Course Director

#### Bret P. Nelson, MD, RDMS, FACEP

Associate Professor of Emergency Medicine  
Director of Emergency Ultrasound  
Mount Sinai Hospital, New York

### Distinguished Faculty

#### Phil Andrus, MD

Assistant Professor of Emergency Medicine  
Associate Director of Emergency Ultrasound  
Mount Sinai Hospital, New York

#### Robert Arntfield, MD

Assistant Professor of Emergency Medicine  
Mount Sinai Hospital, New York

#### Danny Duque, MD, RDMS

Assistant Professor of Emergency Medicine  
Director of Emergency Ultrasound  
Elmhurst Hospital Center, New York

#### Jim Tsung, MD, MPH

Assistant Professor of Emergency Medicine  
Director of Pediatric Emergency Ultrasound  
Mount Sinai Hospital, New York

#### Scott Weingart, MD, RDMS

Assistant Professor of Emergency Medicine  
Director of Emergency Critical Care  
Elmhurst Hospital Center, New York

### Registration fee of \$450 includes:

- ✓ 8 hours of CME credit
- ✓ Manual of Emergency and Critical Care Ultrasound

### Register online at:

[www.mssm.edu/cme/courses/ultrasound](http://www.mssm.edu/cme/courses/ultrasound)

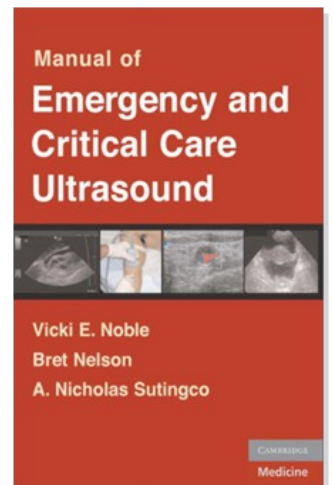
For additional information:

Email: [cme@mssm.edu](mailto:cme@mssm.edu)

Phone 212-731-7950

### Cancellation Policy

Cancellations must be confirmed in writing to the course director by March 1, 2011 for refund. No refunds will be made on cancellations after this date or for “no shows.”



*It is the policy of Mount Sinai School of Medicine to ensure objectivity, balance, independence, transparency, and scientific rigor in all CME-sponsored educational activities. All faculty participating in the planning or implementation of a sponsored activity are expected to disclose to the audience any relevant financial relationships and to assist in resolving any conflict of interest that may arise from the relationship. Presenters must also make a meaningful disclosure to the audience of their discussions of unlabeled or unapproved drugs or devices. This information will be available as part of the course material.*